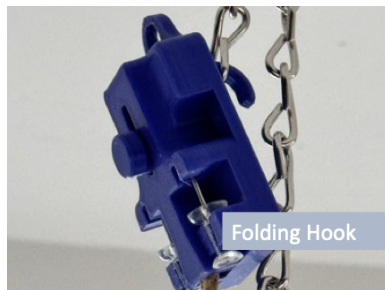
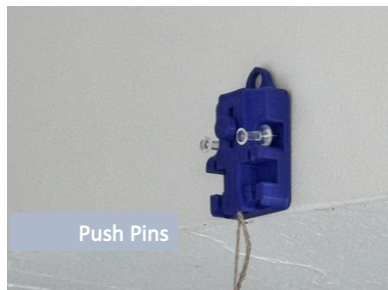
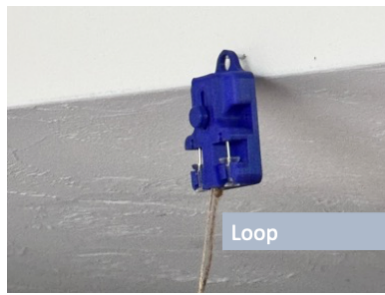
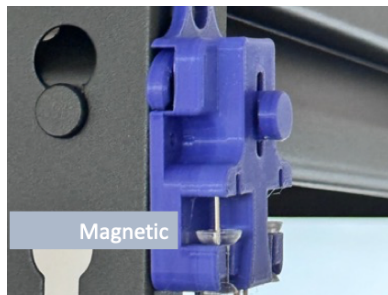


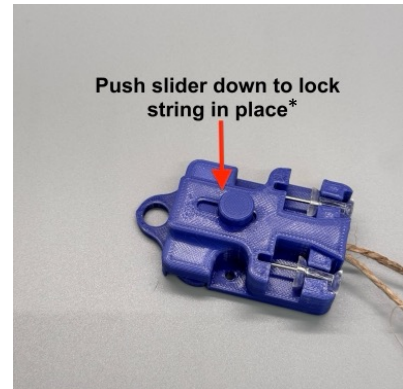
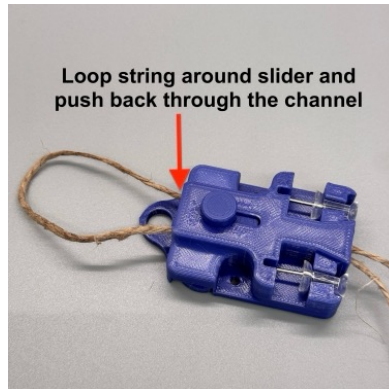
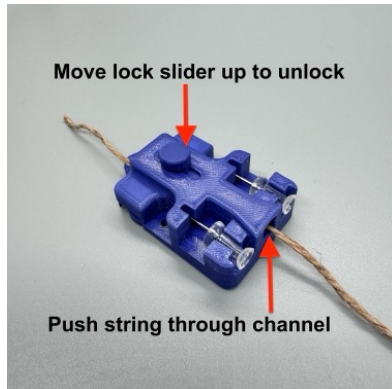


Four ways to attach a suspended hide to a wall, object, or ceiling



Easily adjust the height of the hide

Most types of firm butcher twine or kitchen twine from a drugstore or dollar store should work fine; I recommend <https://www.amazon.com/gp/product/B06XDMQTD8/>. Push the string through the channel inside the Buddy and lock it in place with the slider at the desired length.



Simply change the length of the string using the locking slider

*You may want to pull down on both ends of the string to secure it

Prefer a video?

<https://tinyurl.com/2cnrvjsc>



Order the Hanging Hide Buddy!

<https://tinyurl.com/5n7fwc2k>

